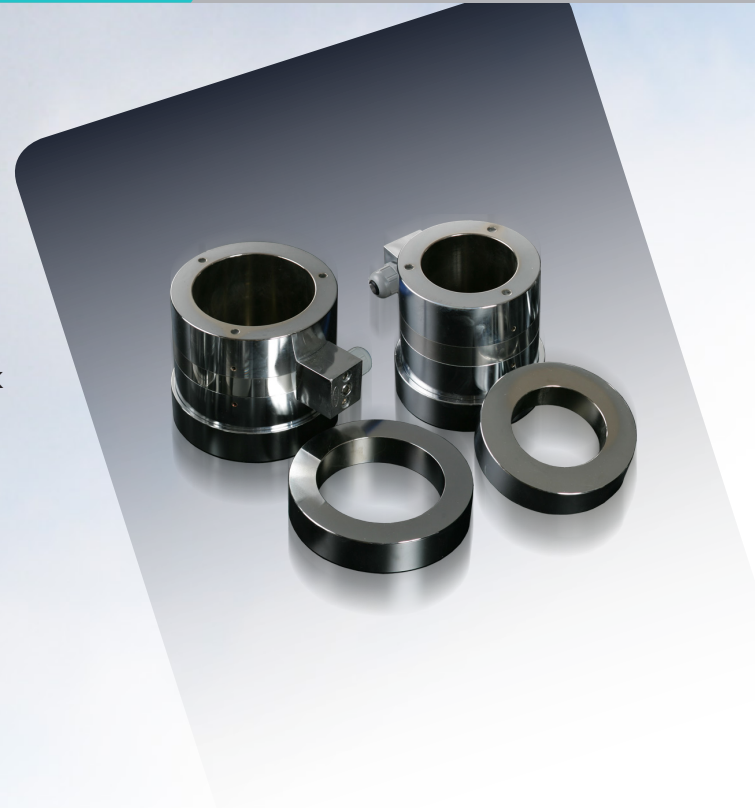


V.W Load Cell

Application

VW load cell is designed to measure loads in tiebacks, anchors, struts, rock bolt and strands in structure
Long term measurement of loads in tiebacks, struts, rock bolts and anchors.
Measurement of loads in supporting systems such as retaining walls, tiebacks and anchors.

VW load cell consists of a cylinder of high-strength. heat treated steel with 3,4 or 6 vibrating wire strain gages placed around the circumference of the cell



Specification

Range	100ton	150ton	200ton
Safe over load	150% F.S.		
Accuracy	$\pm 0.25\%$ F.S. ~ $\pm 0.5\%$ F.S.		
Resolution	0.025% F.S.		
Nonlinearity	$\pm 0.5\%$ F.S.		
Operating temp	$-20^{\circ}\text{C} \sim 100^{\circ}\text{C}$		

