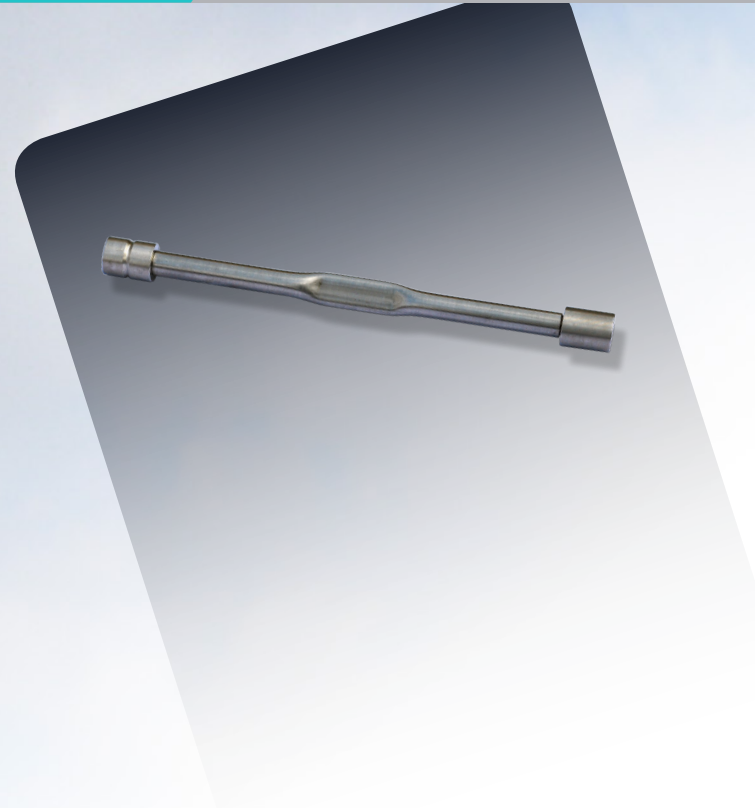


Arc Weldable Strain Gage

Arc weldable Strain gage is designed to measure strain in structures such as excavation, bracing, struts, piles, bridges and sheet piling.

- Measurement of strain in steel member of bridges and bulidings during and after construction.
- Measurement of load in struts used to brace deep excavations.
- Measurement of strain in tunnel linings and anchor system.
- Finding of areas on concentrated stresses in pipelines.
- Measurement of strain in concrete, using anchors for mounting on the surface of concrete structure.



Arc Weldable strain gage consists of length of steel wire tensioned between two mounting blocks.

■ Specification

Range	3000 microstrain
Resoulution	1.0 microstrain
Accuracy	$\pm 0.1\%$ F.S.
Nonlinearity	0.5% F.S.
Operating Temp	-20 ~ 100°C
Active Gage length	150mm

