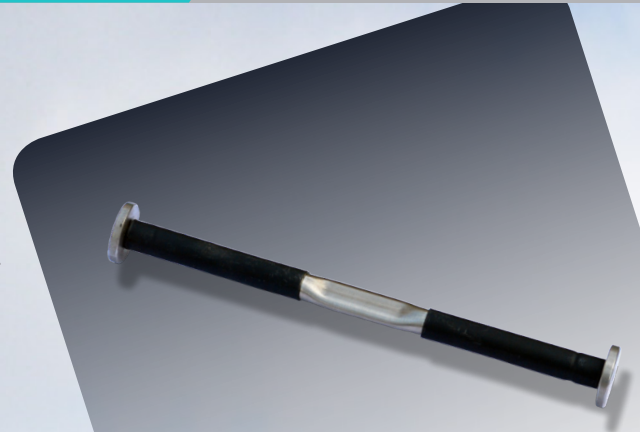


Embedment Strain Gage

Embedment strain gage is designed to measure strain in concrete structure such as foundations, dams, nuclear power plants, piles, bridges and tunnel lining

- Measurement of strain in tunnel shotcrete lining
- Measurement of strain in concrete structures

Embedment strain gage consists of steel wire, tensioned between two end flanges, that is protected by a tube with O-ring seals.



■ Specification

Range	3000 microstrain
Resolution	1.0 microstrain
Accuracy	± 0.1% F.S.
Nonlinearity	0.5% F.S.
Operating Temp	-20°C ~ 100°C
Active Gage Length	153mm

